

To Let



Medical / Class E Use

2 Harley Street

London, W1G 9PS

1,782 sq ft
(165.55 sq m)



RENT

£175,000
pax



**RATES
PAYABLE**

£54,402
per annum



**SERVICE
CHARGE**

£29,500
per annum

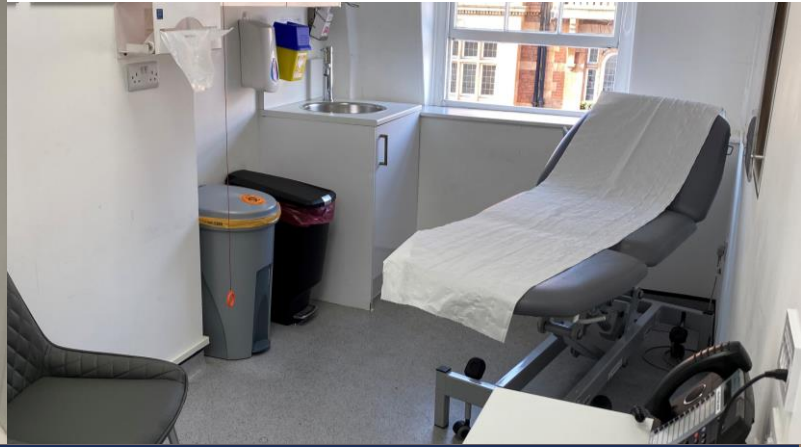


EPC

C

matthews-goodman.co.uk

[@MatthewsGood](https://twitter.com/MatthewsGood) [in matthews-and-goodman](https://www.linkedin.com/company/matthews-and-goodman)



2 Harley Street

London, W1G 9PG

Description

The available accommodation comprises a medical suite on the third floor with Medical/Class E use, configured to form a number of consulting/treatment rooms

Location

2 Harley Street is situated on the corner of Cavendish Square in the heart of the Harley Street Medical Area. The building is also close to excellent shopping facilities and amenities nearby Oxford Street and Marylebone High Street. Oxford Circus (Victoria, Bakerloo and Central Lines) and Bond Street (Central and Jubilee Lines) Underground stations are within easy walking distance of the property.

Accommodation

Property	Sq Ft	Sq M
Third Floor	1,782	165.55
Total	1,782	165.55

Terms

New lease available direct from the Landlord on flexible terms on arrangement.



Reception



Lift



Air Con



Tube

**Matthews
& Goodman**

matthews-goodman.co.uk

[@MatthewsGood](https://twitter.com/MatthewsGood) [in matthews-and-goodman](https://www.linkedin.com/company/matthews-and-goodman)

• Liverpool • London • Manchester • Birmingham • Leeds

2 Harley Street

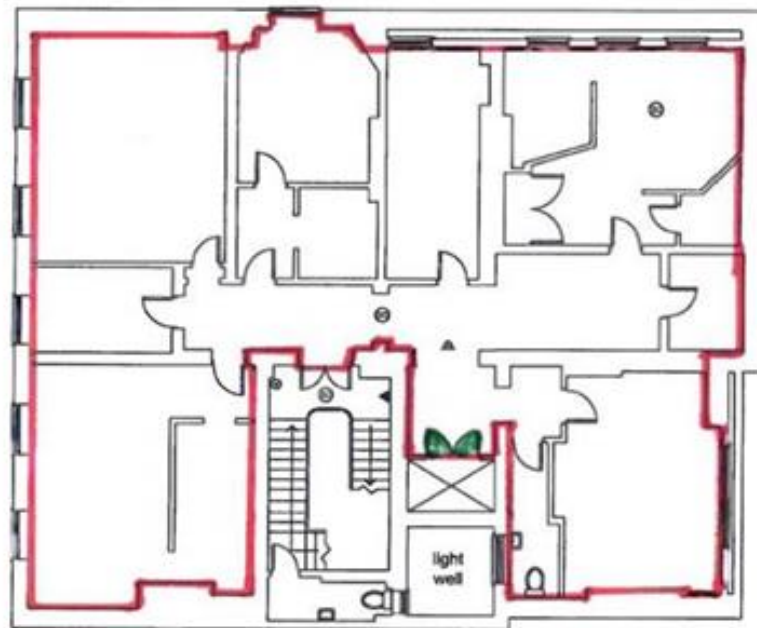
London, W1G 9PA



HARLEY STREET



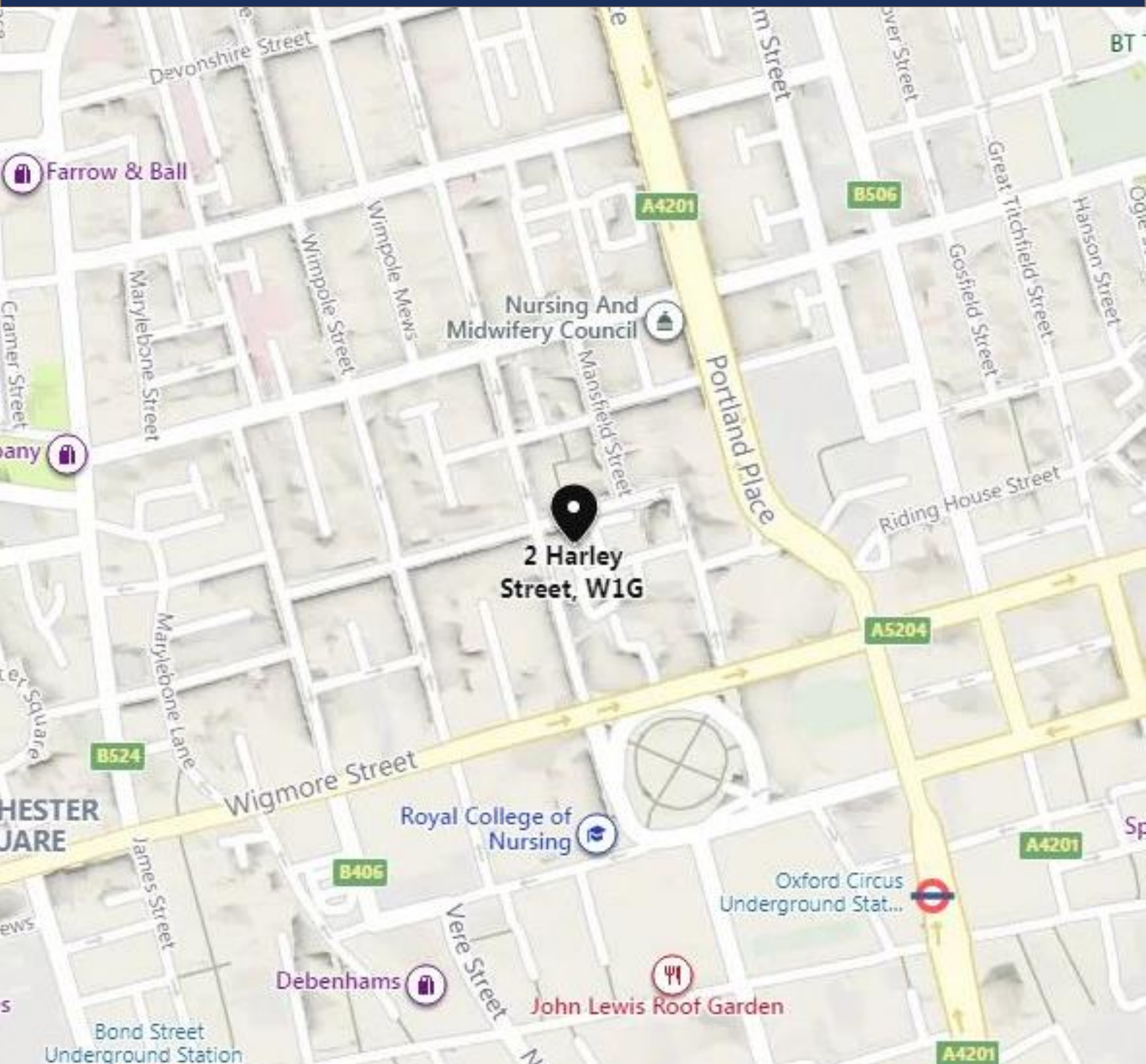
CAVENDISH SQUARE



Third floor plan

2 Harley Street

London, W1G 9PA



Neil Prince

t. 020 7717 3170

m: 07778 911 061

e. nprince@matthews-goodman.co.uk

Michael Lane

t. 020 7367 5398

m: 07884 414 828

e. mlane@matthews-goodman.co.uk

Joint Agent - Rubix

t. 020 7205 2025

DISCLAIMER

Matthews & Goodman as agent for the Vendors/Lessors of this property give notice that 1) These particulars have been checked and are understood to be materially correct as at the date of publication. The content, however, is given without responsibility and should not, in any circumstances, be relied upon as representations of fact. Intending purchasers/lessees should satisfy themselves as to their correctness and as to the availability to the property, prior to arranging viewings of the property. 2) These particulars are a guide only and do not form part of an offer or contract. 3) Matthews & Goodman, their employees, nor the Vendors/Lessors make or give any representation or warranty in relation to the property. 4) No representation or warranty is given in respect of any part, equipment or services at the property. 5) Unless otherwise stated, prices, rents or other prices quoted are exclusive of VAT. Intending purchaser/lessees must satisfy themselves independently as to the incidence of VAT in respect of any transaction relating to this property. 6) In accordance with Anti Money Laundering Regulations identification and confirmation of source of funding may be required from the acquiring party. 7) All floor areas have been measured and calculated to comply with RICS guidelines and practice statements at the date of publication, unless otherwise stated. 8) Date of Publication: October 2021